

# Airport Guide

Great Things to Do at Changi Airport

Inside:

Experience  
the best of  
Changi  
Airport




## Sunflower Garden

at Terminal 2



 **tripadvisor** 

"beautiful!" - gsiemion7

 24 Hours

Had some time to wait for my next flight so we visited this amazing and beautiful garden for about 30 minutes, absolutely breath taking! So pretty and def worth the stop!



**CHANGI**  
airport singapore



## TRANSIT & TRANSFER THINGS TO NOTE

### Flight Information

- Refer to the Flight Information screens for your departing gate and time.
- Be at your departure gate at least 30 minutes before your departure time.
- Transit passengers who clear Arrival Immigration will not be able to enter the Transit area until they have checked-in for their connecting flight.

### Enjoy A Free Singapore Tour



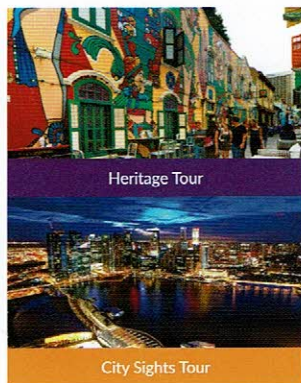
*"Great glimpse of Singapore"*  
- Milind-Kawade



If you have at least 5.5 hours (or at least 6 hours for City Sights Tour) to spare till your connecting flight at Changi Airport, do join our Free Singapore Tour\*!

This 2.5-hour guided bus tour runs daily at regular times, and introduces visitors to the vibrant culture, background, arts and architecture of Singapore.

There are two different tours to choose from. The Heritage Tour brings you through Singapore's past and present as we visit colonial and cultural districts with two short stopovers at the Merlion Park and Kampong Glam.



The City Sights Tour showcases modern Singapore with a short stopover at Merlion Park, against the magnificent cityscape of the Singapore Flyer, Marina

Bay Sands and the Esplanade. Have another short stopover at Gardens by the Bay where you will find the magical Avatar-like Supertrees.

### Location of registration booths (Transit Area)

- T1** Please stay in the transit area and proceed to the nearest booth at Terminal 2 to register
- T2** Transit Area, between Transfer Lounge F and Skytrain to Terminal 3 near the escalator to Arrival Immigration (Level 2)
- T3** Transit Area, near Transfer Lounge A and Gate A1-A8 (Level 2)



\* To register, please remain in the transit area and do not clear immigration. Other terms and conditions apply.

### Guidelines for Liquids, Aerosols and Gels in Hand-carried Luggage

- Liquids, aerosols and gels must be in containers with a maximum capacity of 100ml each.
- Containers must be placed in a 1-litre transparent resealable plastic bag.
- The resealable plastic bag must be completely closed.
- One resealable plastic bag allowed per person. The resealable bag must be presented separately at the security screening point.
- Exemptions will be made for medication, baby food and special dietary items.
- Liquor or other liquids, aerosols and gel products (more than 100ml) bought within transit or from overseas airports have to be sealed in tamper-evident bags.



To know more about the LAGs guidelines, please approach our information counters.





# TRAVELLER ESSENCE

## Relax



### Transit Hotel\* **T1 T2 T3**

Level 3

Weary after a long flight? Book a comfortable room without having to clear immigration.



### Transit Lounges\* **T1 T2 T3**

Level 3

Need a quiet place to rest or catch up on work? Your airline might have an exclusive lounge facility for you. Alternatively, you can also use the pay-per-use lounges.



### Public Lounge\* **T3**

Level 1, *Public areas*

As the only lounge in the public area of the airport, The Haven offers a tranquil environment for travellers to rest and relax before, after or between flights. The lounge offers shower rooms, nap rooms and a complimentary range of beverages, snacks and light meals.



### Hair & Beauty Services\* **T2**

Level 3

⌚ 11am - 9pm

Pamper yourself and step out looking your best with Changi's hair & beauty services.



### Shower & Spa Services\* **T1 T2 T3**

Level 3

Come by our paid lounges for shower facilities, nail care, foot reflexology, massage therapy and a gym.



### Swimming Pool\* **T1**

Level 3

⌚ 6am - 12am

Take a dip at Aerotel Transit Hotel rooftop pool as you watch planes take off from the runway.

## Play



### Children's Playground **T1 T2 T3**

**T1 T2 T3**

Play area for children aged from 1 to 12.



### Entertainment Deck **T2**

⌚ 6am - 12am

From PlayStation 3 to Kinect, it is your one-stop multimedia entertainment centre.



### Interactive Art **T1 T2 T3**

*Transit and Public areas*

Try your hand at wood block rubbing and make your own wood block print with icons inspired by popular culture.



### TV Lounge **T1 T3**

Families can take a break and catch up on their favourite TV shows on our comfy couches.

## Family



### Family Zone **T2**

The Family Zone has diaper changing counters, nursing rooms, play areas and cartoon channels on TV for the little ones.



### Baby Care Room **T1 T2 T3**

The Baby Care Room are nursing rooms equipped with hot water dispensers and diaper changing counters.

## Work



### Business Centres\* **T1 T2 T3**

Services like typing, mailing of documents, and 24-hour photocopying and faxing are available at our business centres.



### Passenger Meeting Services\* **T1 T2 T3**

*Public areas*

Experience a warm welcome and fond farewell with our range of meet & greet services.

## Connectivity



### Free WiFi **T1 T2 T3**

Surf the web with free wireless access (#WiFi@Changi) in the transit areas. Select #WiFi@Changi and follow the instructions to obtain the password to access.



### Free Internet Access **T1 T2 T3**

Changi Airport has 550 Internet stations accessible all day long. Alternatively, you can log in at our free Internet workstations via your laptop.



### Free Mobile Charging Points **T1 T2 T3**

Keep your mobile phones and devices charged with more than 800 free USB ports and universal power sockets.

# TIALS



## iChangi App

Download the iChangi HD app for real-time flight info, deals, shopping and dining at Changi Airport.



## Prayer Rooms T1 T2 T3

For a quiet devotional moment, make your way to our prayer rooms.



## Speedpost@Changi\* T1 T2 T3

You can now courier your hand-carried items that are disallowed onboard the aircraft due to security restrictions on non-compliance with Liquids, Aerosols and Gels (LAGs) guidelines. The kiosks are conveniently located near departure gates.

## Amenities



## Free-to-use Rest Areas T1 T2 T3

Sit back or catch a nap on comfy snooze chairs located in Changi Airport's quietest spots.



## Smoking Areas T1 T2 T3

Smokers can make their way to designated indoor and outdoor smoking areas around the airport.

## Services



## GST Refund T1 T2 T3

Apply for your GST refund using the eTRS (electronic tourist refund scheme) self-help kiosks.



## Post Boxes T1 T2 T3

**Transit and Public areas**  
Drop your mail into the SingPost boxes or any information counter located in the Departure Transit areas.



## Post Office\* T2

Public area

9am - 6pm

(Closed on Sat, Sun & PH)

Postal services are available at the post office in Departure Check-in Hall.

All facilities and services are located in transit areas unless otherwise stated.

\* Charges apply

## Connecting Between Terminals



### Skytrain

Hop onto the Skytrain to transfer to other terminals. Skytrain operates from 5.00am to 2.30am at both transit and public areas.

During Skytrain's non-operational hours:

### Transit Areas:

Passengers can transfer on foot between terminals using the inter-terminal travellers located throughout the Departure Transit.

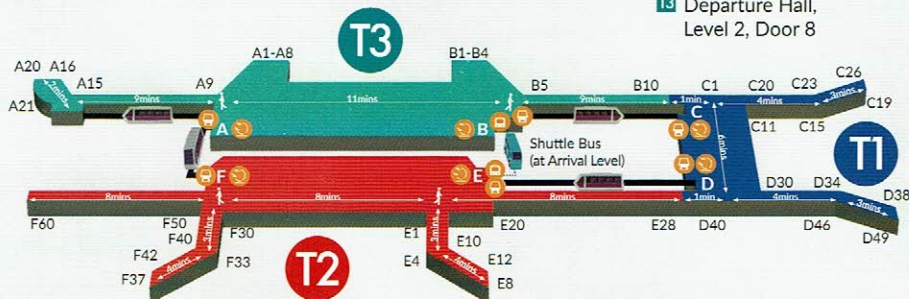
### Public Areas:

Passengers can transfer between terminals using the bus services available at all terminals.

**T1** Departure Hall, Level 2, Door 5

**T2** Arrival Hall, Level 1, Door 1

**T3** Departure Hall, Level 2, Door 8



Skytrain



Transfer Lounge



Shuttle Bus (Transit areas only)



Walking Time (Transit areas only)



# CHANGI AIRPORT: A SHOPPER'S PARADISE

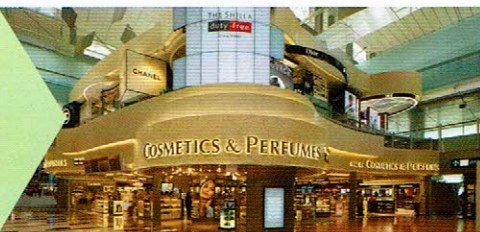


## Wines & Spirits Duplex **T2 T3**

At DFS's Wines & Spirits Duplexes at T2 and T3, be amazed by an impressive selection of premium brands from all over the world. You can even enjoy complimentary samples of these exquisite drinks while you shop!

## Shilla Beauty Loft **T3**

Presenting a unique, elevated shopping experience at the Shilla Beauty Loft. Travellers can look forward to beauty services from luxury skincare brands Chanel, Dior, La Prairie and SK-II.



## ZARA Duplex **T3**

Since ZARA opened its first store in the coastal town of A Coruña in Spain, the fashion retail chain has grown from strength to strength with more than 2,000 stores worldwide. Make sure you visit ZARA at Changi Airport for some much-needed style retail therapy!



## Changi Rewards Card

Enjoy up to 3% rebates and other exciting rewards when you shop and dine at Changi Airport - only with the Changi Rewards card.

Not a member yet? Pick up a card for FREE at any Changi Rewards counters, Airport Information counters and participating outlets today.



## Changi Gift Card

Be the first to impress your loved ones with the Changi Gift Card which comes in 3 uniquely Changi Airport designs - T1's Kinetic Rain, T2's Flight Information Board and T3's Skylights. Find out more at [www.iShopChangi.com/giftcard](http://www.iShopChangi.com/giftcard) and collect them all now!

## SHOP & DINE GUIDES

Pick up your copy of Shop & Dine at information counters and designated stands around Changi Airport to know about:



Shops and F&B outlets in every terminal

Transit Area maps to help you get around

Exciting gift ideas for your loved ones



You can also download a printable e-version of Shop & Dine! Just scan the QR code above or visit [changiairport.com/guides](http://changiairport.com/guides).



# TRAVELLERS' PICKS

Check out what travellers say about their Changi experience on  [tripadvisor](#)

T1  
TRANSIT



Cactus Garden

24 Hours



"cacti in an airport?" - JohnG3121

T1  
TRANSIT



Swimming Pool with Jacuzzi

6am to 12am



"Ideal layover site" - GeorGel18N

T2  
TRANSIT



Enchanted Garden

24 Hours



"a perfect photo-point" - Madhav U

T2  
TRANSIT



Orchid Garden

24 Hours



"Beautiful and relaxing" - MichaelBrianT

T3  
TRANSIT



Butterfly Garden

24 Hours



"Made out trip a little more fun!" - MissMichellerenee

T3  
TRANSIT




Movie Theatre

24 Hours



"Best way to relax" - Isaac v

Ratings from  [tripadvisor](#) are accurate as of June 2017. Find out more on [tripadvisor.com.sg](#).

While every effort has been made to ensure that the information in this brochure is accurate at the time of print (June 2017), Changi Airport Group (Singapore) Pte. Ltd. shall not be held liable for any dissatisfaction, damages, loss, injury or inconvenience arising from the contents of this brochure.

Copyright © Changi Airport Group (Singapore) Pte. Ltd. 2017. All rights reserved.

Connect with us on social media



@ChangiAirport

 [tripadvisor](#)

Review us on TripAdvisor



[youtube.com/changiairport](#)